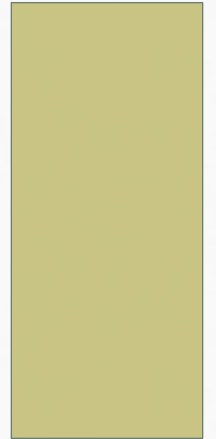




A Tradition of Stewardship  
A Commitment to Service

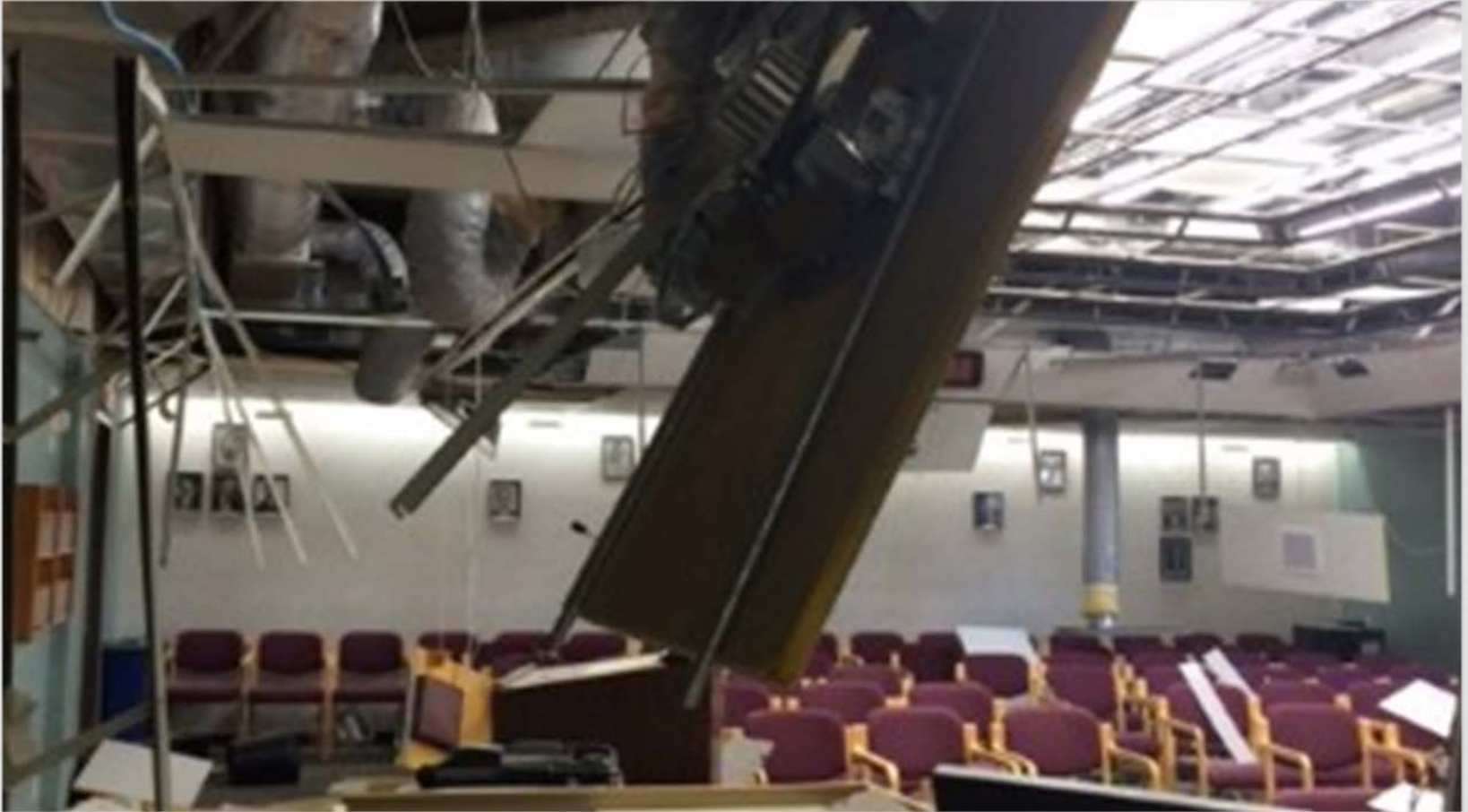
# SOUTH NAPA EARTHQUAKE

AUGUST 24, 2014



# ARE YOU PREPARED

- At 3:20 a.m. on Sunday, August 24, 2014, a 6.0 magnitude earthquake struck Napa County.
- The Napa earthquake claimed the life of one victim and injured nearly 300 people. Thousands of homes and businesses have sustained major damage.
- Estimated structural damages are \$362.4 million and \$80.3 million in economic impact to the wine industry.
- Napa's two U.S. Post Offices, several Government buildings, including Courthouse, schools, hotels and adult care facilities sustained major damage. One Post Office remains closed.



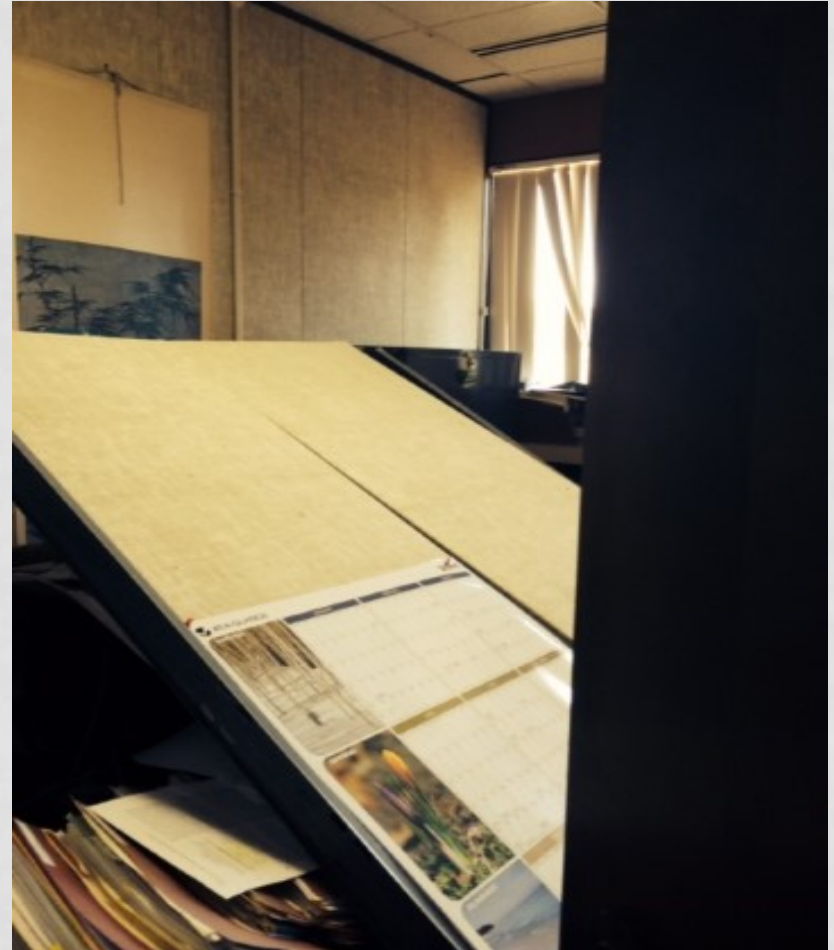
## NAPA COUNTY EMERGENCY OPERATION CENTER

DO YOU HAVE AN ALTERNATE SITE?

# ARE YOU PREPARED

- Direction from the Board of Supervisors was to bring County services back on line as quickly as possible.
- Significant damage to several County buildings and infrastructure. One County administration building still remains closed, part of the Hall of Justice and Historic Courthouse are closed to the public.
- Relocating about 400 employees from the Board of Supervisors, County Assessor-Recorder, Elections, District Attorney, Public Defender, County Executive Office, County Counsel, Child Support Services, and several HHSA Departments/Agencies and Probation.

# COUNTY OFFICES



# ARE YOU READY TO MOVE

- What would happen if your office was uninhabitable?
- What if you could not remove any files, records, equipment, or supplies?
- What resources would staff need to continue operations?
- Are you prepared to have staff working only earthquake related projects?
- Do you have partnerships with other agencies for services?

# EIGHT MONTHS LATER

- Starting in May 2015 several departments will begin to move back into their original office space.
- Estimated County earthquake-related expenses for FY 2014-15 exceed \$20 million.
- Pursuing both FEMA and insurance avenues for reimbursement of the damages. We are still in the preliminary stages of recovery.
- Local businesses have suffered an estimated \$110 million in damages and lost revenue, resulting in lower revenues, Sales Tax and Transient Occupancy Tax.



## WINE STORAGE

AUGUST 24, 2014





## THIRD AND BROWN STREET

AUGUST 24, 2014